

A Classification of Computer Systems Used in Foreign Language Education

Viatcheslav Yatsko

Reference data:

Yatsko, Viatcheslav (2009) A Classification of Computer Systems Used in Foreign Language Education. In:
Reinelt, R. (Ed.) (2009) Into the Next Decade with (2nd) FL Teaching Rudolf Reinelt Research Laboratory EU
Matsuyama, Japan, p. 272-293.

A Classification of Computer Systems Used in Foreign Language Education

V.Yatsko

Computational Linguistics Laboratory at
Katanov State University of Khakasia

(CLL at KSUK)

www.cll.khsu.ru

Criteria for Classification of Educational Systems (ES):

- 1. Technological**
- 2. Didactical**

Technological Criterion

1. Local ES

**Distributed on CDs,
Used for self-study**

2. Network ES

- LAN
- MAN
- WAN

Technological Criterion

Local ES

TELL ME MORE by Auralog

<http://www.auralog.com>

- **Speech recognition**
- **Up to 10 levels of learning**
- **Self control**
- **Reading, writing, listening, speaking, vocabulary, grammar, and culture**

Technological Criterion

Network ES

LAN

Bulletin Board System, Future University-Hakodate.

- **Non-distributed access**
- **Discussion of home assignments**
- **Preparation for in-class activities**

Technological Criterion

Network ES

LAN

Partially Automated Symmetric Summarization (PASS) from CLL at KSUK (get Demo at <http://cli.khsu.ru/cli/downloads.aspx>)

- **Distributed access**
- **Teacher's Application**
- **Student's Application**

Technological Criterion

Network ES

LAN

PASS

Teacher's Application

- Prepare and upload assignments
- Set rules to adjust complexity
- Get statistics about student's activities

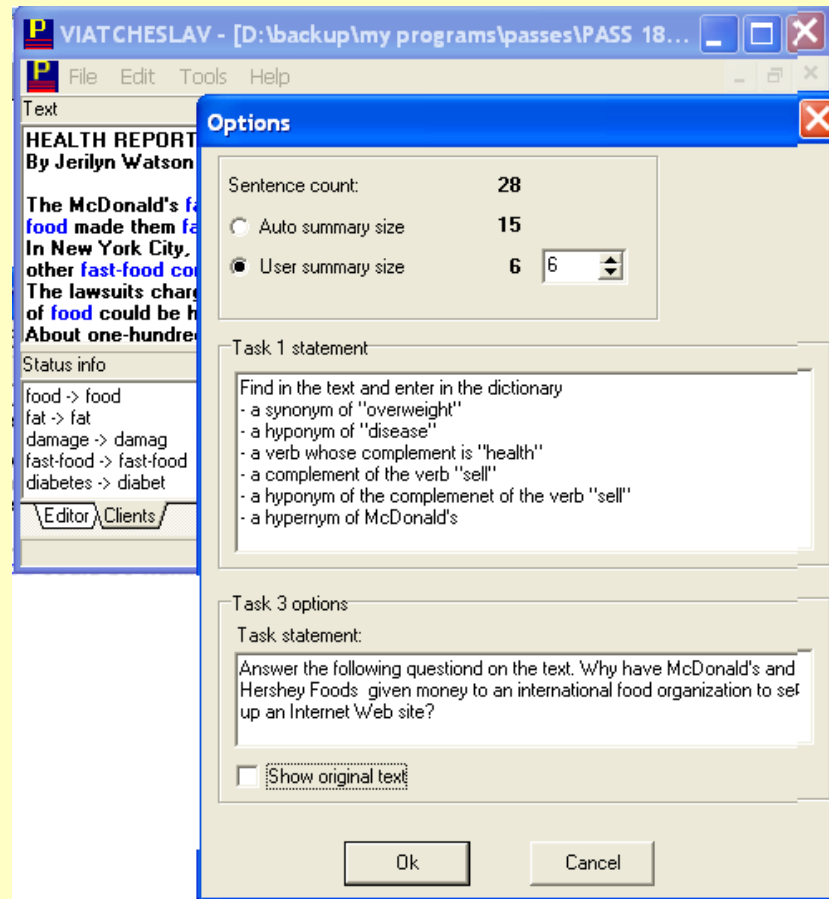
Technological Criterion

Network ES

LAN

PASS

Teacher's Application: upload assignments



Technological Criterion

Network ES

LAN

PASS

Student's Application

- **Fulfill assignments**
- **Get prompts about your progress**
- **Submit the results to the teacher**

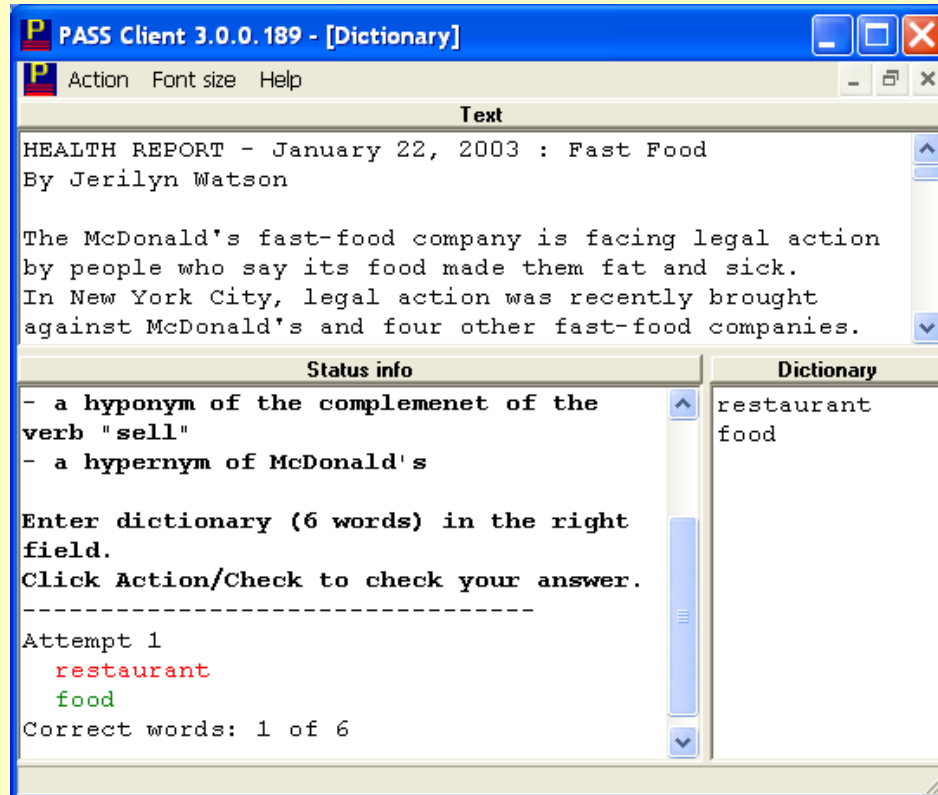
Technological Criterion

Network ES

LAN

PASS

Student's Application: fulfill assignments and get prompt about your progress



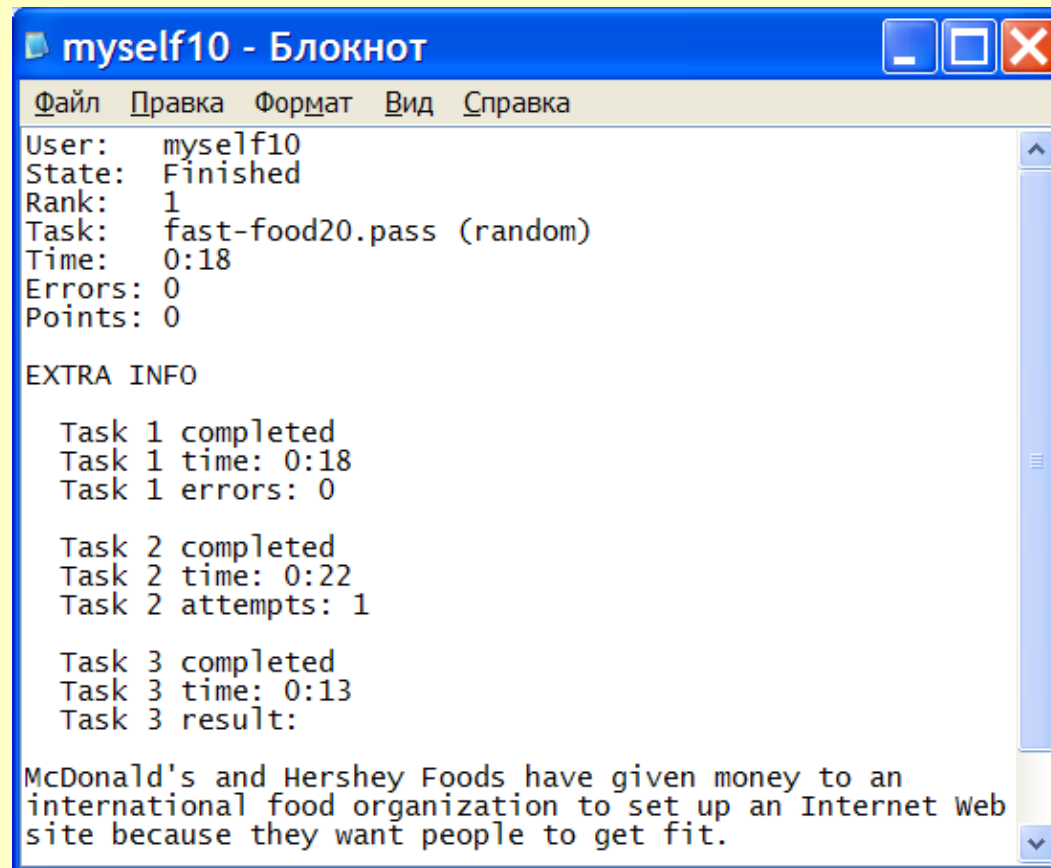
Technological Criterion

Network ES

LAN

PASS

Student's Application: submit the results to the teacher



```
myself10 - Блокнот
Файл  Правка  Формат  Вид  Справка
User:  myself10
State: Finished
Rank:  1
Task:  fast-food20.pass (random)
Time:  0:18
Errors: 0
Points: 0

EXTRA INFO

Task 1 completed
Task 1 time: 0:18
Task 1 errors: 0

Task 2 completed
Task 2 time: 0:22
Task 2 attempts: 1

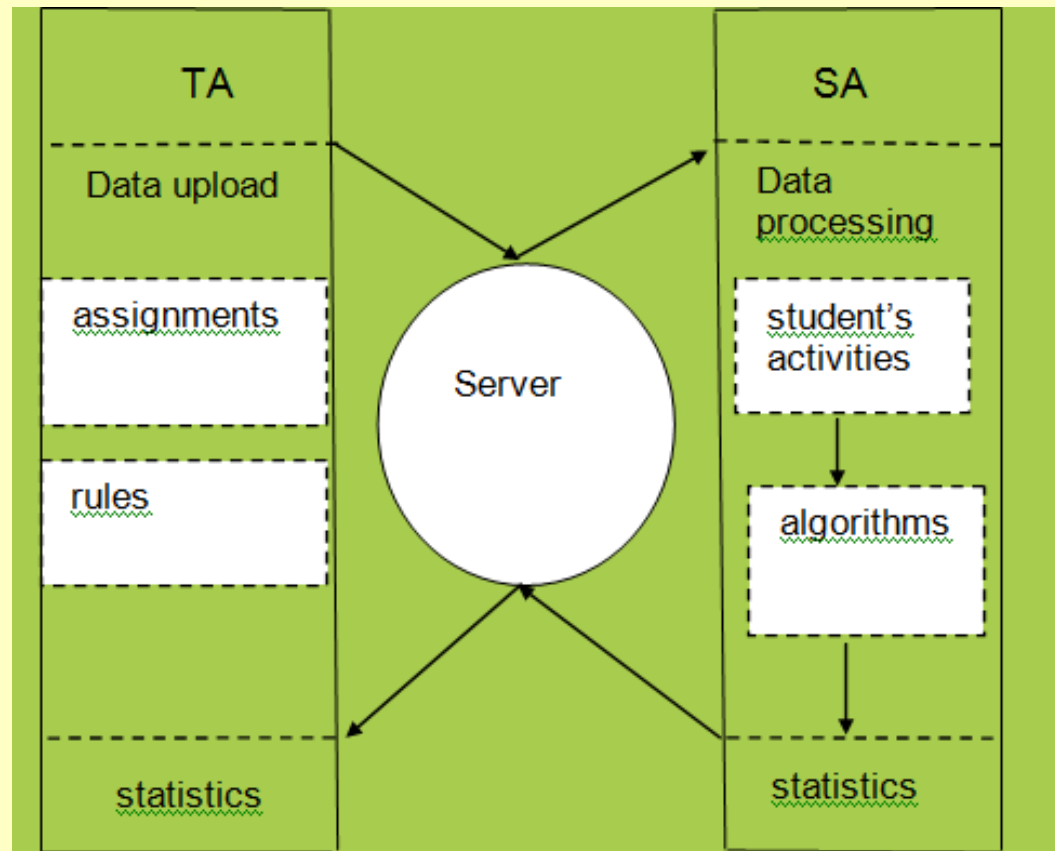
Task 3 completed
Task 3 time: 0:13
Task 3 result:

McDonald's and Hershey Foods have given money to an
international food organization to set up an Internet Web
site because they want people to get fit.
```

Technological Criterion

Network ES

LAN: A Generalized architecture of a client-server ES



Technological Criterion

Network ES

MAN

TeleNex network in Hong Kong

- **TeleGram** - a database of information about English grammar and usage
 - Student's Problems files with samples of typical errors
- **TeleTeach** - a database of graded teaching materials

Technological Criterion

Network ES

WAN

INTERNET Resources

- <http://www.englishtown.com>
- Individual study plan tailored for your needs
- Private Tutoring
- University-certified diploma

Didactic Criterion

- **Computer Assisted Language Learning (CALL)**
 - **Uncontrolled self-study**
 - **Controlled self-study (ES distributed on CDs)**
- **Computer Assisted Language Instruction (CALI)**
 - **Integrated ES**
 - **Non integrated ES**

Didactic Criterion

CALL

Uncontrolled self-study

- **Without educational environment**
 - Chat rooms
- **With educational environment**
 - Multiuser object oriented domains (MOOs)

Didactic Criterion

CALL

Uncontrolled self-study

- MOOs

- SchMOOze, City University of New York,
Hunter College

<http://schmooze.hunter.cuny.edu>

Virtual Campus

Culture Center, Library, Student Union, Class-rooms,
Administration, Conference Center, MOOrrey's Bar,
Dormitory

Make a tour about the campus

Talk with its inhabitants

Didactic Criterion

CALI

- **Integrated ES** — integrated into a University/High School curriculum
- **Non Integrated ES** – individual tutoring via distance education (e.g. Englishtown.com, see above)

Didactic Criterion

CALI

- **ES for in-class activities**
(e.g. PASS, see above)

- **ES for out-of-class activities:**

TITE (Translation in Teaching English)
from CLL at KSUK

Didactic Criterion

CALI

ES for out-of-class activities

TITE (use online Demo at <http://cII.khsu.ru/cII/tite/>)

- client-server architecture
- Limited texts – **the translation is limited by fixed time; text is deleted if student doesn't keep to the time limit unlimited**
- Unlimited texts – no time limit, the translation may be saved and continued
- Dictionary+ option - the teacher indicates words to be translated; the other words appear automatically

ES classified according to Didactic Criteria

